

South Gloucestershire Landscape Character Assessment

Annex II: Strategic Viewpoints

South Gloucestershire Council

Final Draft Report for Adoption Chapter 15

Prepared by LUC

September 2024



Version	Status	Prepared	Checked	Approved	Date
1	Draft Method and Pilot	E White L Jewitt	K Davies	K Davies	03.04.2023
2	Draft Report	L Jewitt V Kakar	E White	K Davies	16.05.2023
3	Draft Report	E White L Jewitt	E White	K Davies	14.07.2023
4	Final Draft	E White L Jewitt	E White	K Davies	01.11.2023
5	Final Draft (updated following New Local Plan Phase 3 consultation)	L Jewitt	E White	K Davies	12.06.2024
6	Final Draft Report for Adoption	L Jewitt	E White	K Davies	11.09.2024



Land Use Consultants Limited

Registered in England. Registered number 2549296. Registered office: 250 Waterloo Road, London SE1 8RD. Printed on 100% recycled paper

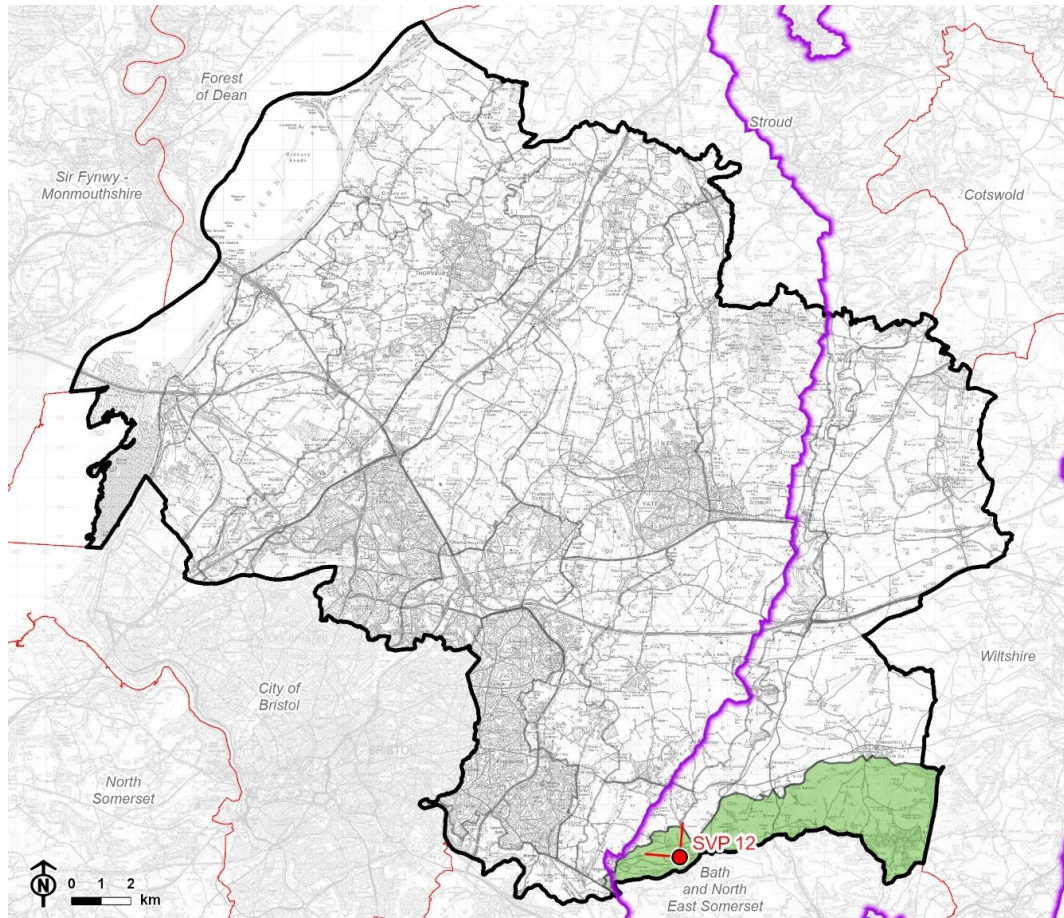
Contents

Chapter 15	103
Strategic Viewpoint 12: Hanging Hill	
Characteristics	108
Summary	109

Chapter 15

Strategic Viewpoint 12: Hanging Hill

Figure 15.1: Location of Strategic Viewpoint 12 and landscape character context

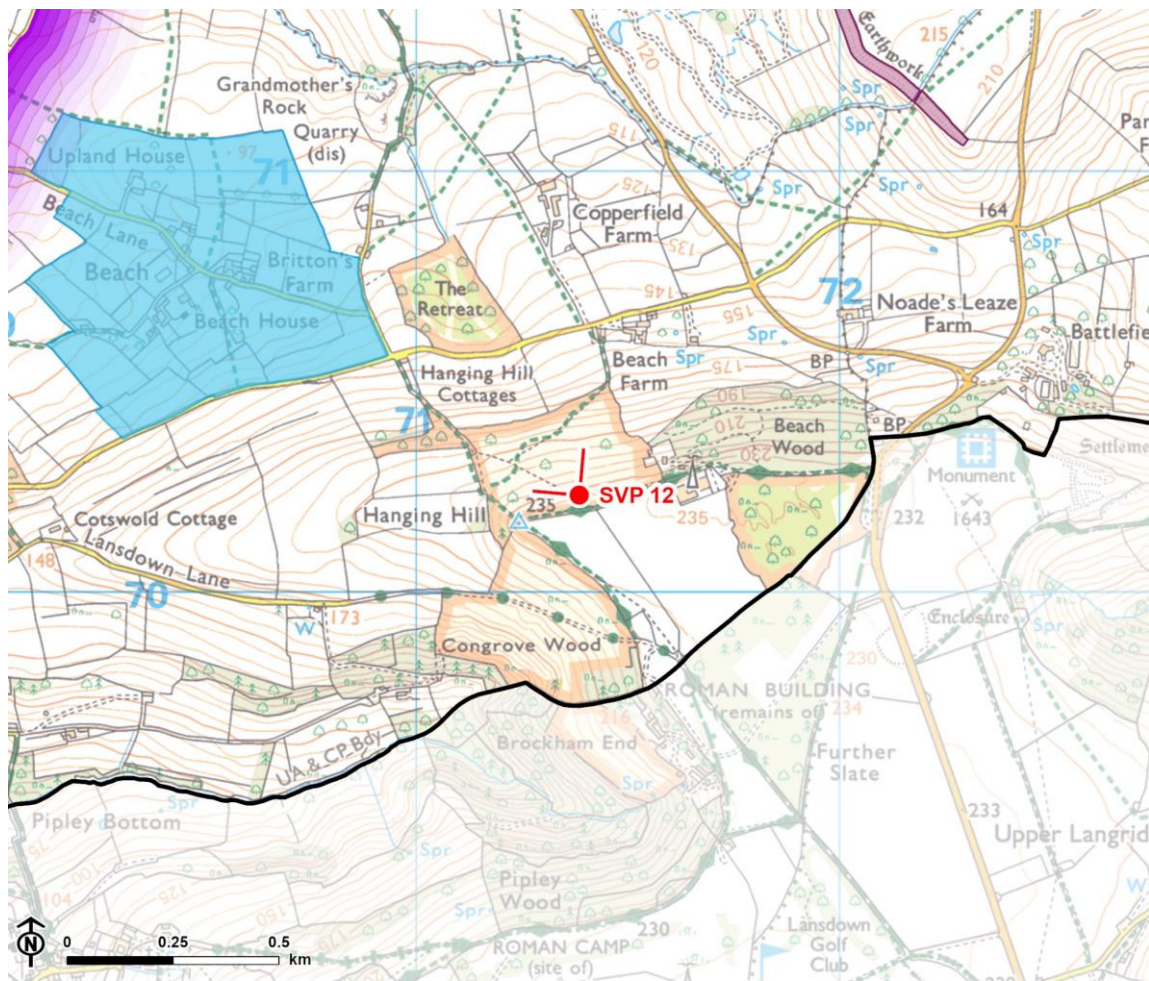


© Natural England copyright © Crown copyright and database rights, Ordnance Survey licence number 100023410 (2024).


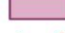

CB:HS, EB:shayler, h LUC 12274_FiguresUpdates_MayJune2024 07/06/2024
Source: LUC, SGDC, NE, OS

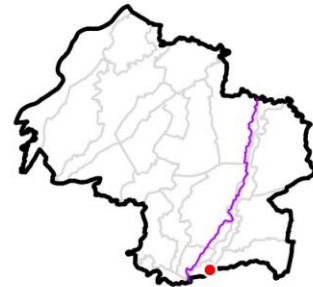
-  Council boundary
-  Neighbouring local authority
-  Cotswolds National Landscape (AONB) boundary
-  LCA 3: Ashwicke Ridges
-  Strategic viewpoint and angle

Figure 15.2: Detailed map of the location of Strategic Viewpoint 12



© Natural England. © Historic England. Contains Ordnance Survey data © Crown copyright and database rights, Ordnance Survey licence number 100023410, 2024.

-  Council boundary
-  Cotswolds National Landscape (AONB) boundary
-  Conservation area
-  Scheduled monument
-  Strategic viewpoint and angle



Viewpoint Information

Grid reference: ST 71386 70230

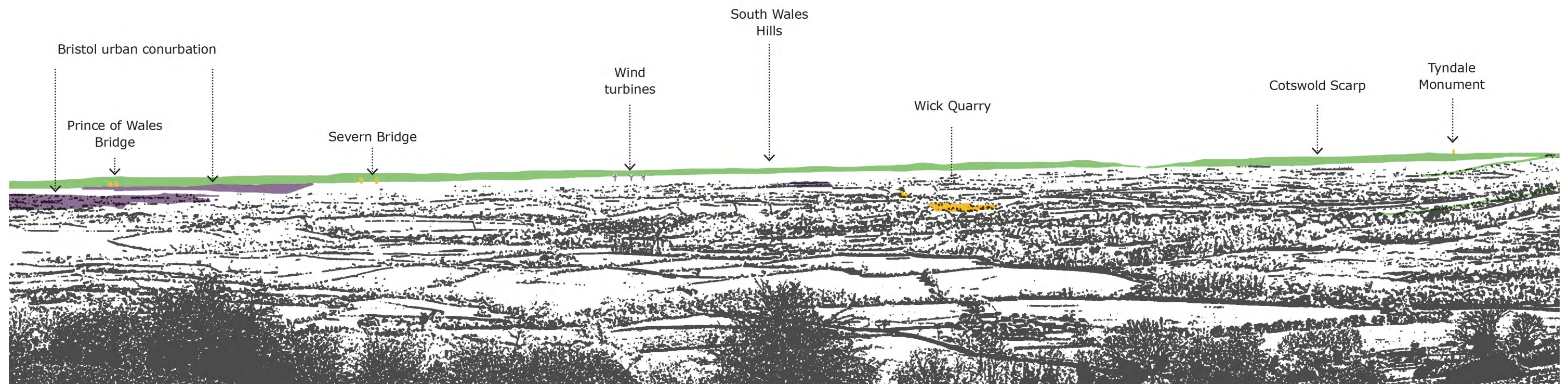
View location: Hanging Hill, Lansdown.


View direction: View north-west over LCA 3: Ashwicke Ridges, LCA 11: Golden Valley, and north towards LCA 4: Cotswold Scarp.

Relationship with Visually Important Hillside (VIH): The viewpoint is located along the Ashwicke Ridges VIH and provides views north-east towards the Cotswold Scarp VIH, and views north-west over the eastern part of Oldland Ridge and Cotswold Lower Slope VIH.

Experienced by: Recreational users of the Cotswold Way National Trail and the open access land on Hanging Hill.

Figure 15.3: View Composition of Strategic Viewpoint 12



 Key landscape feature

 Landmark / historic feature


 Detractive feature

Figure 15.4: Full Panoramic Photograph of Strategic Viewpoint 12



Strategic Viewpoint 12: Hanging Hill



Strategic Viewpoint 12 (continued)

Characteristics

Popularity, access and facilities

- Views from this viewpoint are representative of those described in LCA 3: Ashwicke Ridges, which notes that “*extensive views are possible over the area from the open upper ridges*”.
- The viewpoint is publicly accessible, located on the Cotswold Way National Trail and on open access land. It is marked on Google Maps as ‘Hanging Hill’ and is likely to attract many visitors as a result.
- A bench is provided nearby to facilitate enjoyment of the view and a commemorative way marker and information board for the Battle of Lansdown is located 255m to the west to provide interpretation of the landscape.

Relationship with the Cotswolds National Landscape (CNL)

- The viewpoint is located within the CNL and provides both views to and from the designated landscape, including views north-east along the Cotswold Scarp.
- Views to and from the Cotswold Scarp are considered to be a special quality of the designated landscape, as set out in the CNL Management Plan.

Quality, value and features of the view

- Hanging Hill is the highest point within South Gloucestershire and so this elevated viewpoint provides a sweeping panoramic view (180°) along the Ashwicke Ridges VIH to the north and north-west over a large proportion of the district. In middle-distance views, the adjacent Golden Valley is seen to the north-west (characterised by a mosaic of irregular, medium sized mixed fields defined by mature hedgerows, interspersed with scattered woodlands, copses and shelterbelts, and a dispersed settlement pattern of scattered farmsteads). The undulating slopes of the Cotswold Scarp are seen in views to the north that

Chapter 15 Strategic Viewpoint 12: Hanging Hill

mainly features the managed landscape of Tracy Park Golf Course, with the distinctive landform of the scarp on the horizon. Longer distance views to the north-west look across the shallow ridges, valleys and vale landscapes of South Gloucestershire where small settlements are scattered across the landscape, and the urban sprawl of the Bristol conurbation forming a dominant feature in views to the north-west. The view extends towards the levels and estuary with the distinctive hillsides of South Wales forming a distinctive backdrop.

- The Severn Bridge and Prince of Wales Bridge form distant landmark features over 24km away.
- A locally distinctive group of three wind turbines near Tytherington are visible 15km away against the relatively low-lying landform; although do not detract from the overall composition of the view given the breadth of the view.
- The viewpoint location is historically significant, associated with The Battle of Lansdown (1643), with a Registered Battlefield located 255m to the west of the viewpoint.

Summary

The Hanging Hill viewpoint is categorised as a SVP as it significantly meets all of the criteria. It is a popular, well known and recorded viewpoint and likely to attract many visitors; it is noted in the South Gloucestershire Landscape Character Assessment as being a natural observation point from which to appreciate the landscape; it is located on a promoted footpath with a bench, commemorative way marker and information board facilitating enjoyment and interpretation of the view; it allows appreciation of the Cotswold National Landscape and provides a notable view from the designated landscape; it provides a panoramic view that takes in notable landscape features and landmark features across most of South Gloucestershire and extends to the hills of South Wales; and it has historic associations with The Battle of Lansdown (1643).

Report produced by LUC

Report produced by LUC

Bristol

12th Floor, Colston Tower, Colston Street, Bristol BS1 4XE

0117 929 1997

bristol@landuse.co.uk

Cardiff

16A, 15th Floor, Brunel House, 2 Fitzalan Rd, Cardiff CF24 0EB

0292 032 9006

cardiff@landuse.co.uk

Edinburgh

Atholl Exchange, 6 Canning Street, Edinburgh EH3 8EG

0131 202 1616

edinburgh@landuse.co.uk

Glasgow

37 Otago Street, Glasgow G12 8JJ

0141 334 9595

glasgow@landuse.co.uk

London

250 Waterloo Road, London SE1 8RD

020 7383 5784

london@landuse.co.uk

Manchester

6th Floor, 55 King Street, Manchester M2 4LQ

0161 537 5960

manchester@landuse.co.uk

landuse.co.uk

Landscape Design / Strategic Planning & Assessment

Development Planning / Urban Design & Masterplanning

Environmental Impact Assessment / Landscape Planning & Assessment

Landscape Management / Ecology / Historic Environment / GIS & Visualisation